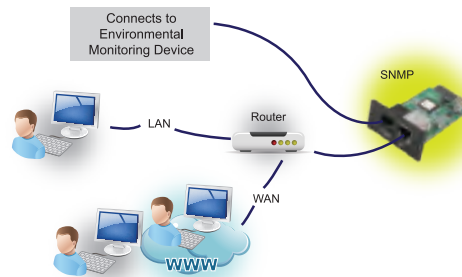
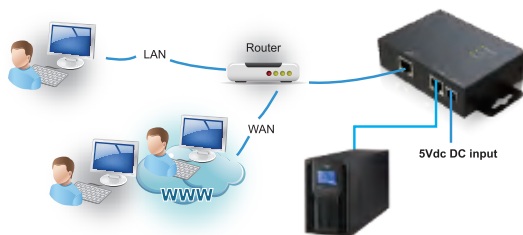


UPS Remote Monitoring and Connectivity

FSP provides complete connectivity solutions with comprehensive products and software package. These connectivity products ensure communication compatibility with a variety external devices through relay, SNMP and Modbus.



Connectivity Product



SNMP Card



SNMP Web Card



SNMP Web Card (DP801B)



SNMP Web Box



Modbus Card



Modbus Web Box



DB9 Port



9-pin Port



EMD

SNMP Web Card/Box

- Allows control and monitoring of multiple inverters through RJ-45 network connection
- Real-time dynamic graphs of UPS / PowerManager data
- Warning notifications via audible alarm, broadcast, mobile messenger, e-mail and SNMP traps
- Historic data log stored in centralized PC database
- Simple firmware upgrade with one click
- Password security protection and remote access management
- Supports optional environmental monitoring detector for temperature, humidity and smoke

Modbus Card

- Real-time control and monitoring of multiple inverters via RS-485 communication port
- Supports Modbus RTU protocol
- Provides MODBUS functions including read Holding Registers and write Registers
- Provides surge protection

Modbus Web Box

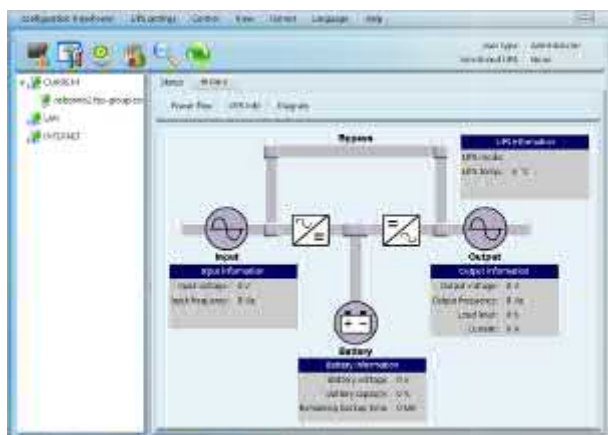
- Supports to monitor off-grid inverter through modbus interface
- Implements MODBUS RTU protocol
- Integrated with WatchPower software
- Supports PowerManager Hybrid series

Relay Card

The AS400 communication card provides contact closures for remote monitoring UPS. To meet different application requirement, the AS400 card is capable of selection the status of the dry-contact signal (active close or active open) by setting jumper.

Environmental Monitoring Device (EMD)

- Plug & use for simple installation with SNMP manager
- Monitor temperature and humidity to protect your precious equipment
- Allow 4 contact closure signals for user-defined usage
- Management software to remote monitor temperature and humidity status via web browser
- Measure temperatures between 0 to 100°C with an accuracy of $\pm 1.5^{\circ}\text{C}$
- Measure relative humidity between 10 to 90% RH with an accuracy of $\pm 3\%$
- Optional smoke alarm available



ViewPower - UPS Management Software

ViewPower Pro is UPS management software which is perfect for home users and enterprises. It can monitor and manage from one to multiple UPSs in a networked environment including LAN, INTERNET and Modbus networks. Integrated with Shutdown Wizard, it can not only prevent data loss from power outage and safely shutdown systems, but also store programming data and scheduled shut down UPSs. All UPS working data and event records can be kept in local database system.