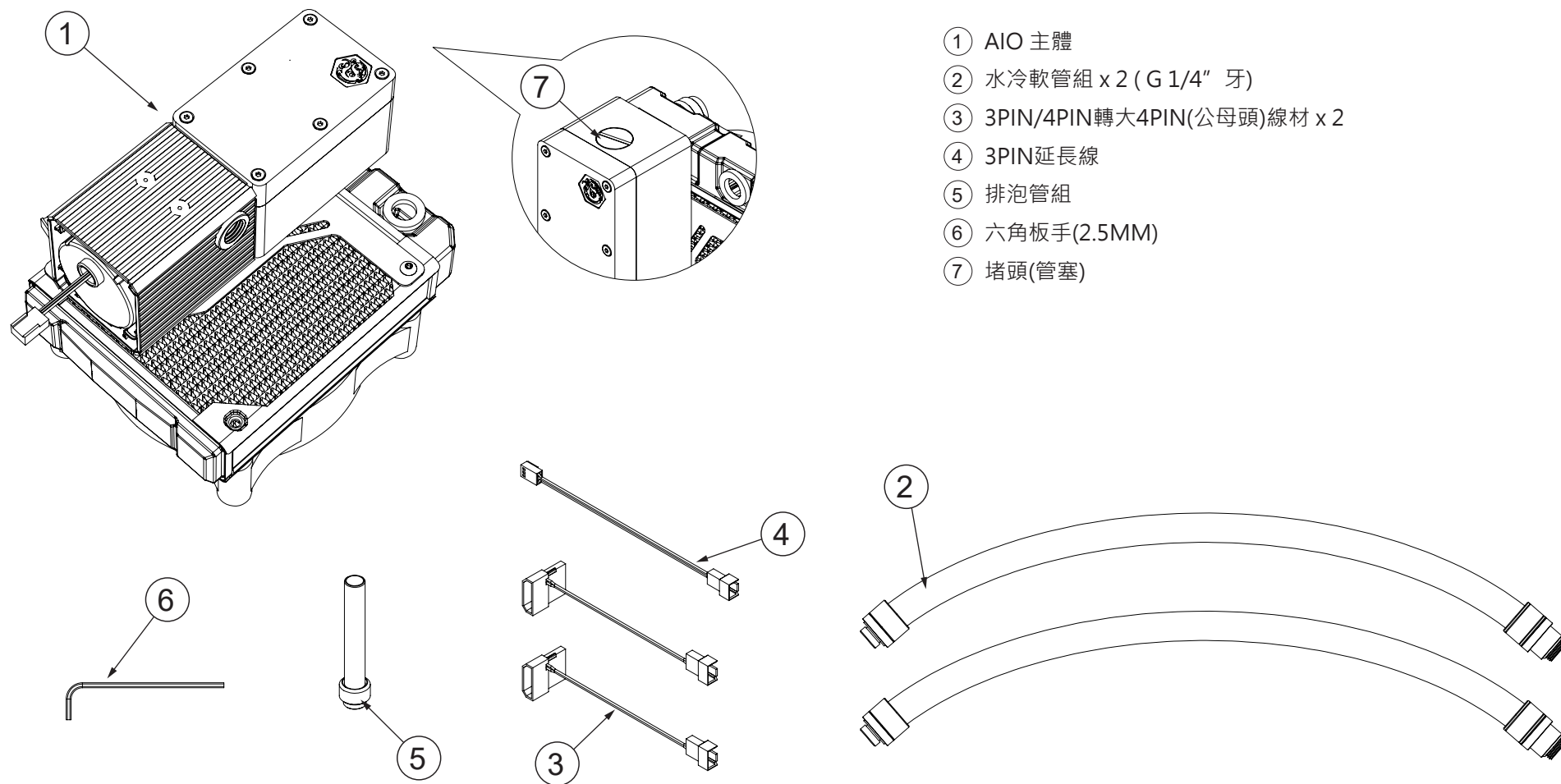


Bitpower Leviathan Slim All In One 120

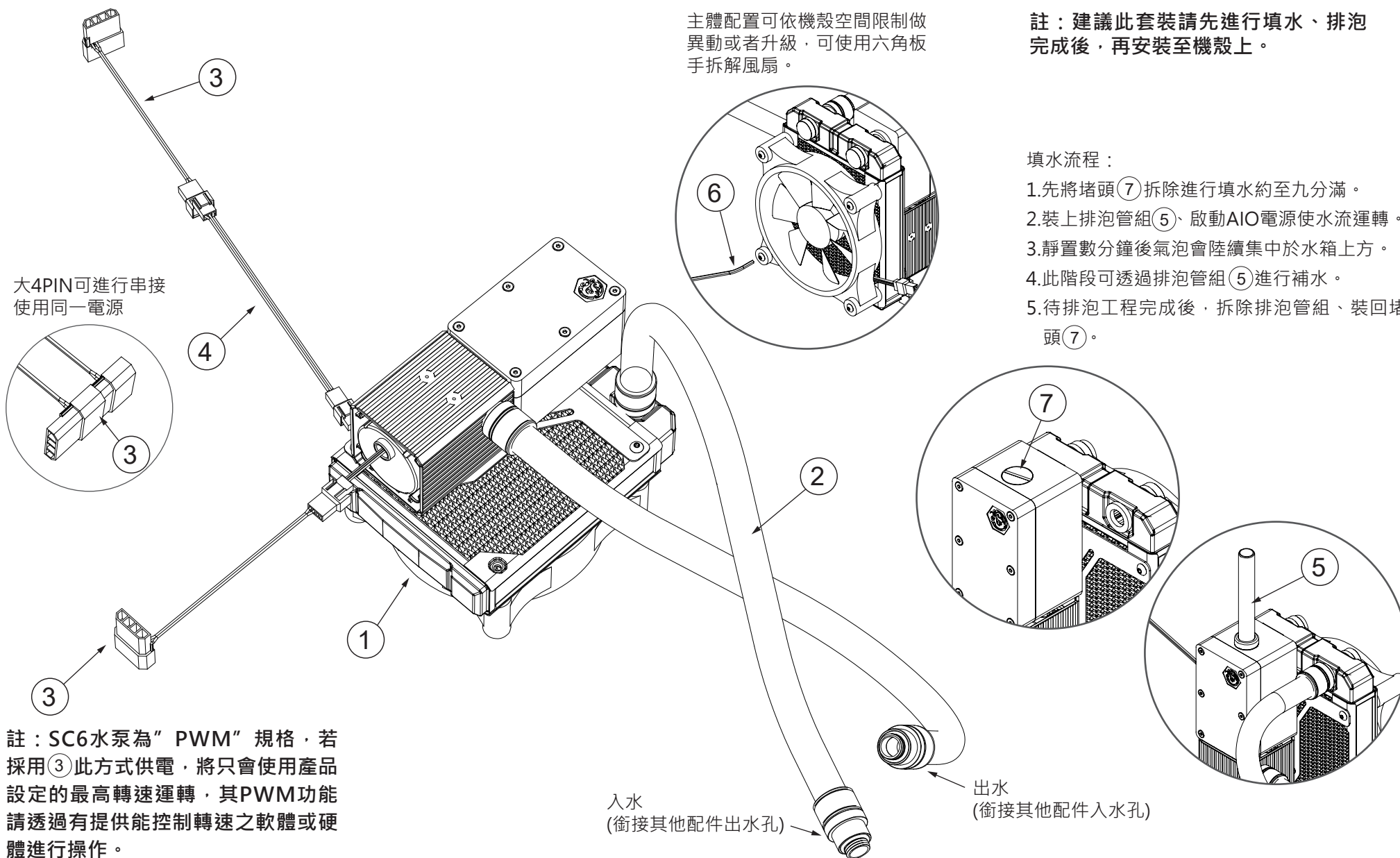
◀ 產品使用說明



注意：跑水前，請先確認所有零件已安裝在正確的位置上，在不開主機，單開水泵的情況下，進行24小時的跑水測試，確保無漏水情況後再開主機，避免發生漏水而導致電腦零件的損壞。

主體配置可依機殼空間限制做異動或者升級，可使用六角板手拆解風扇。

註：建議此套裝請先進行填水、排泡完成後，再安裝至機殼上。



填水流程：

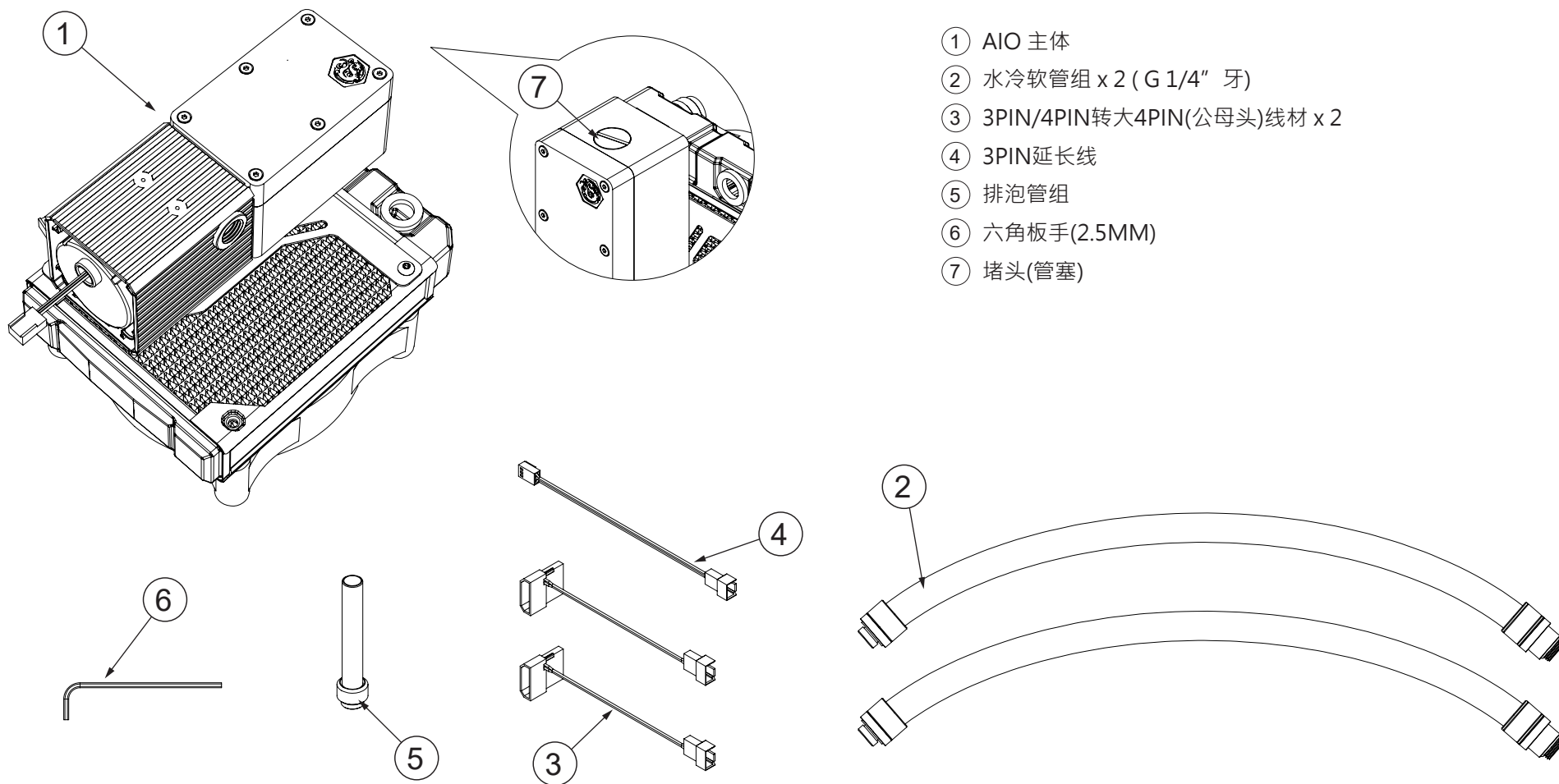
1. 先將堵頭⑦拆除進行填水約至九分滿。
2. 裝上排泡管組⑤、啟動AIO電源使水流運轉。
3. 靜置數分鐘後氣泡會陸續集中於水箱上方。
4. 此階段可透過排泡管組⑤進行補水。
5. 待排泡工程完成後，拆除排泡管組、裝回堵頭⑦。



注意：跑水前，請先確認所有零件已安裝在正確的位置上，在不開主機，單開水泵的情況下，進行24小時的跑水測試，確保無漏水情況後再開主機，避免發生漏水而導致電腦零件的損壞。

Bitpower Leviathan Slim All In One 120

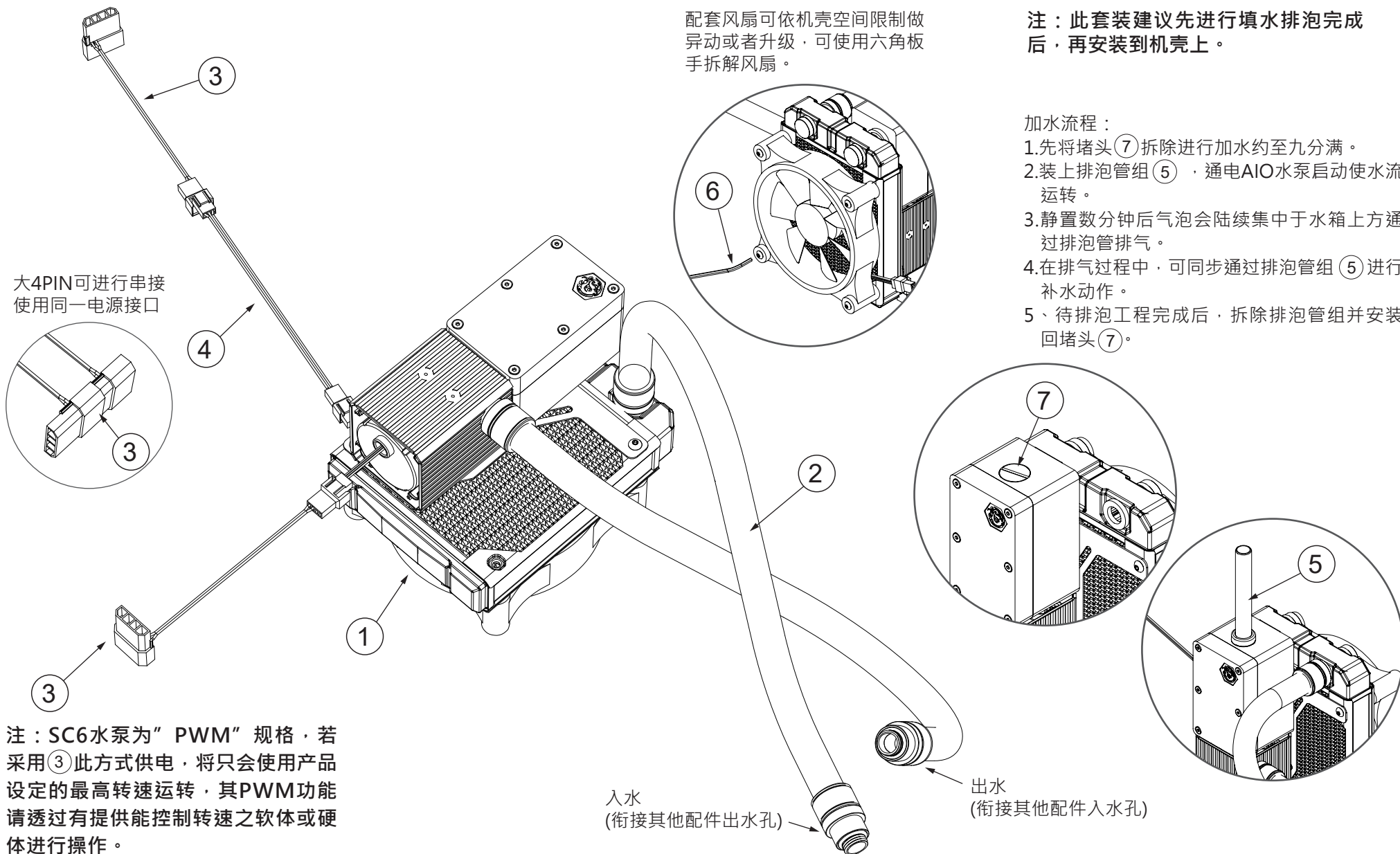
◀ 产品使用说明



注意：跑水前，请先确认所有零件已安装在正确的位置上，在不开主机，单开水泵的情况下，进行24小时的跑水测试，确保无漏水情况后，再开主机，避免发生漏水而导致电脑零件的损坏。

配套风扇可依机壳空间限制做异动或者升级，可使用六角板手拆解风扇。

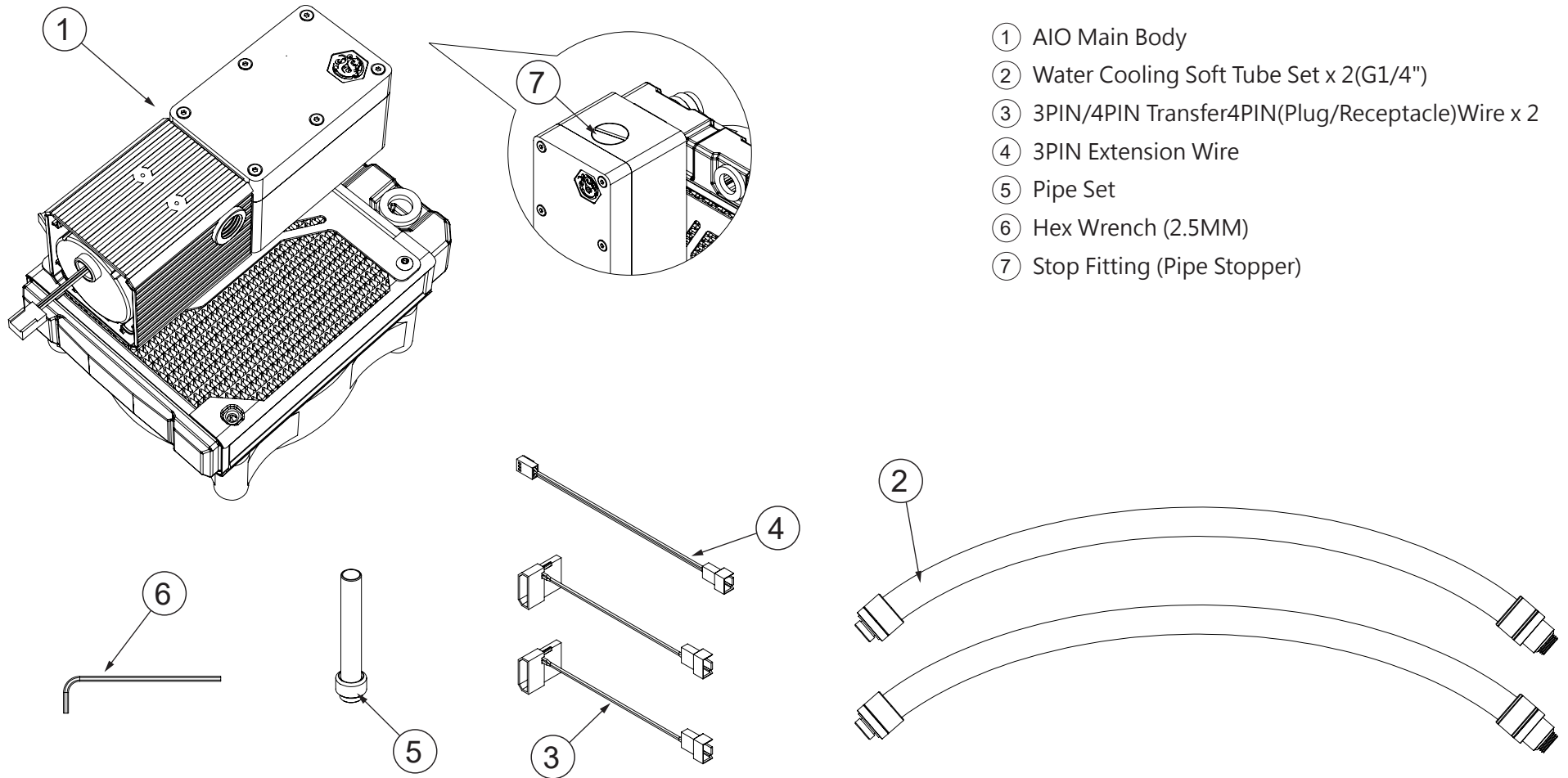
注：此套装建议先进行填水排泡完成后，再安装到机壳上。



注意：跑水前，请先确认所有零件已安装在正确的位置上，在不开主机，单开水泵的情况下，进行24小时的跑水测试，确保无漏水情况后开主机，避免发生漏水而导致电脑零件的损坏。

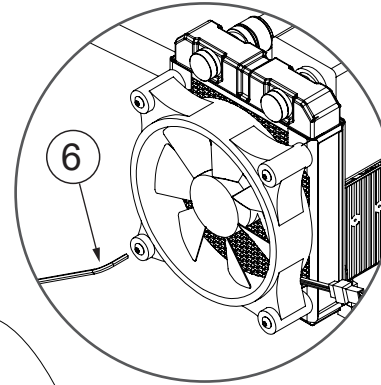
Bitpower Leviathan Slim All In One 120

◀ Product instructions



Before fill in water, please make sure all the component be installed correctly, avoiding leaking happen and destroy the PC component.

Disposition of main body can be changed or upgraded by the case space. User can use hex wrench to dismantle the fan.

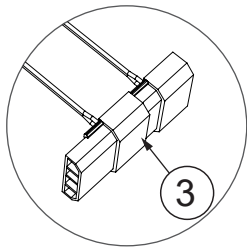


Remark: Using this set package, we suggest to fill with water first and exhaust bubble, then to install in the case.

Procedure of filling with water:

1. Firstly, dismantle stop fitting (7) to fill with water to 90%.
2. Install the pipe set (5), and turn on AIO power to turn around water.
3. After setting still a few minutes, bubble will gather up to the top of tank continuously.
4. User can fill with water through pipe set (5) at this step.
5. After finishing of exhausting bubble, dismantle pipe set and install the stop fitting (7).

Big 4PIN can connect to use same power.



Remark: SC6 pump is "PWM". If using (3) this way to supply power, it will use the fastest speed to operate. The function of PWM can be active by the software or hardware with controlling speed.

Water Inlet (connected with another outlet of accessory)

Water Outlet (connected with another inlet of accessory)



Before fill in water, please make sure all the component be installed correctly, avoiding leaking happen and destroy the PC component.